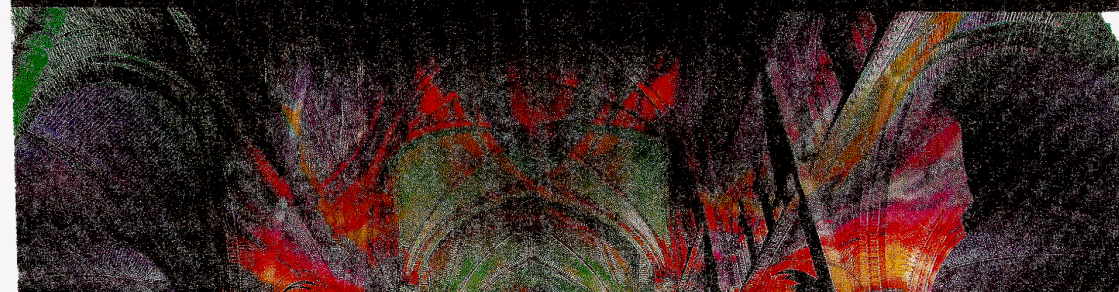


EINDHOVENS ED DAGBLAD

GLOW

EINDHOVEN EN OMSTREKEN - 108 -pagina's



LOCATIE: Catharinaplein
TITEL: 'Equilibrium'
NAAM: Teresa Mar

LOCATIE: Vestingwal
TITEL: 'River of light'
NAAM: Ats. Beale



- Ze zijn nog niet klaar om te zien.
- Ja, enorme stelling aan de zijkant van de kerk.
- En sjouwende mensen.
- Dat wordt de hele avond.
- Wat moet het worden?
- Een lichtgevende beleving.

LOCATIE: Bourlonplein
TITEL: 'The river of light'
NAAM: Graham



- Dit is Graham...
- Oh, wat mooi!
- Nou, dat is een beetje...
- Ja, en dus?
- Nou, zie je die...
- Dit is Graham...
- Oh, wat mooi!
- Nou, dat is een beetje...
- Ja, en dus?
- Nou, zie je die...

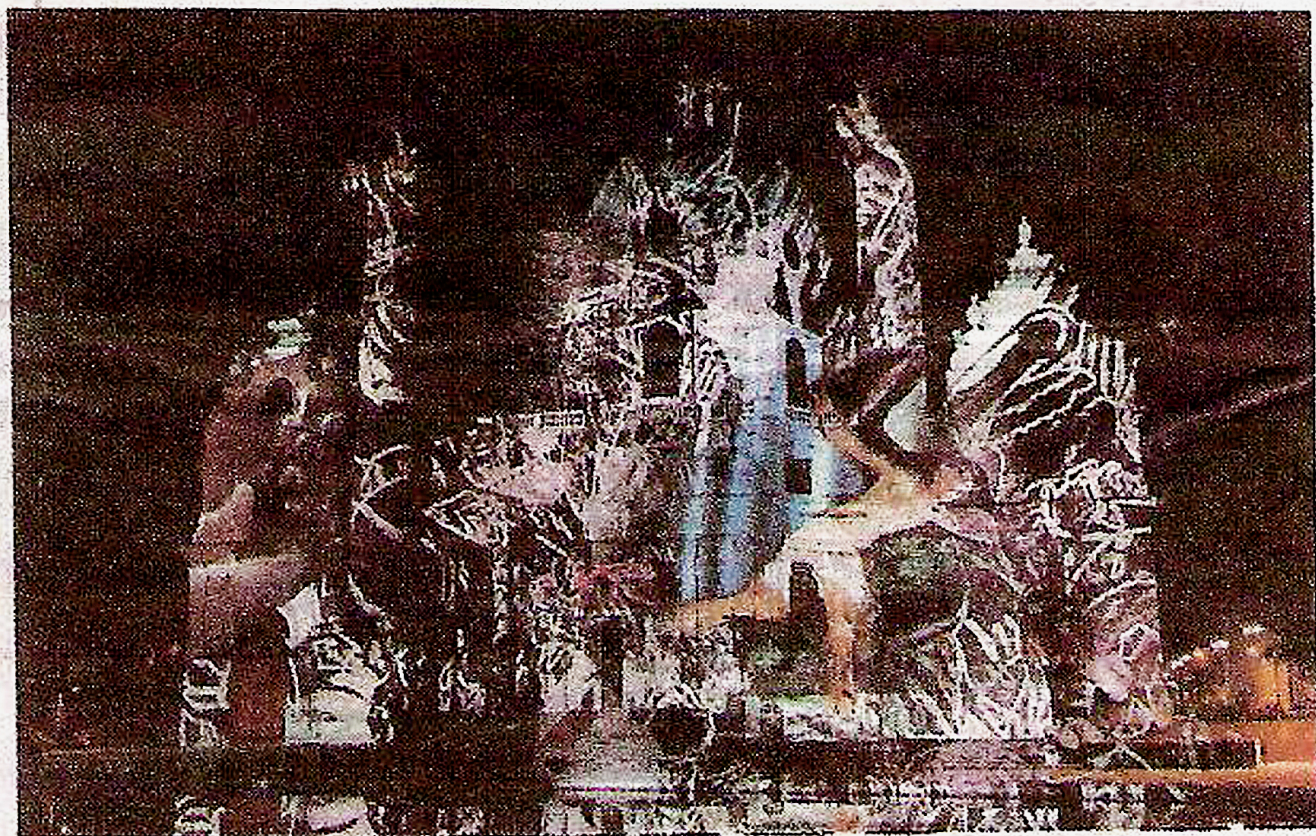
- Dit is zo mooi dat zelfs de kerkklok er stil van is...
- God waardeert dit ook Zeker.
- Deze kunstenaar, trouwens wel de enige vrouw van het stel, maakt met die projecties een compleet

echt wel geniaal.
- Misschien word je dat vanzelf als je in Spanje woont en hier een keer op bezoek komt. Arm Eindhoven, moet ze hebben gedacht.
- Met milie fletse Catharinaplein.

Tenminste: als je onderweg niet je nek hebt gebroken in zo'n geul.
- Nou, dan vragen we toch aan Teresa wat 't kost?!
- En wie gaat dat betalen?
- Ho, ho. Als je zo iets goed aan-

Karlskirche: Lichtspiele auf der Fassade

Eine eindrucksvolle Lichtinstallation zieht derzeit die Blicke nächtlicher Spaziergänger auf die Karlskirche. Die Fassade erstrahlt in einem Spiel von Farben und Mustern, mittels lichtstärkster Projektoren der Welt von Pani. Die von „MyPlace Selfstorage“ und Juwelier Köchert gesponserte Installation der Künstlerin Teresa Mar soll auf die Missionswoche, und damit auf die Missionsprojekte der Pfarrgemeinden, aufmerksam machen.



GEORG REISCH/PANI

Lichtinstallation: Karlskirche mit vorbeifliegendem Engel

KURIER

DONNERSTAG, 27. MAI 2010



GLOW: FORUM OF
LIGHT IN ART AND
ARCHITECTURE
NOV. 6 - NOV. 13
EINDHOVEN 2010

5. Aldo Hoeben

Project: *Impression*
Location: Krabbendampad

The work of Aldo Hoeben is all about the use of perspective. He sets the rules of perspective to influence our perception of space.

Hoeben has placed a box with flexible material on a blank wall at the backside of V&D. The visitor can touch the material with his/her hands. At the same time a projection appears on the wall which looks as if a huge hand from the inside puts pressure on the wall and deforms it. The movement of the visitor's hands is precisely followed.

A wall should be rigid and strong enough to carry a roof and to provide strength to the construction. The artist uses this expectation to confuse the public. Using an interactive projection he creates an illusion that seems to melt the massive walls and becoming soft and pliable in the hands of the visitor.

www.fieldofview.com

6. Teresa Mar

Project: *Equilibrium*
Location: St. Catharina Church

The projection on the St. Catharina Church is composed of images from the Internet, advertising leaflets, newspapers and magazines. The Austrian Teresa Mar merges these images into a colorful composition which slowly changes of atmosphere. Some images, such as women's faces, human figures or angels, are still recognizable. Most images are processed, cut and twisted in a way that we just perceive them as an abstract form.

For Teresa Mar life can be reduced to a search for balance between light and dark. Moments of silence and contemplation are necessary in order to achieve this balance. With *Equilibrium* she connects the church as a mystical place with a stream of images in which the opposites figuration and abstraction, but also light and dark, form a fragile balance. The sound is from Michael Trommer and Dubreak.

www.teresamar.com

7. Michel Suk and Philips Philharmonic Choir

Project: *Rejoice in the Lamb*
Location: St. Catharina Church

The 70-strong Philips Philharmonic Choir performs three concerts at the St. Catharina Church in which light plays a major role. Led by Gijs Leemaars they will perform *Rejoice in the Lamb* by Benjamin Britten, accompanied by organ and soloists. The piece is written for the acoustics of a large church and takes advantage of the reverberation in the building.

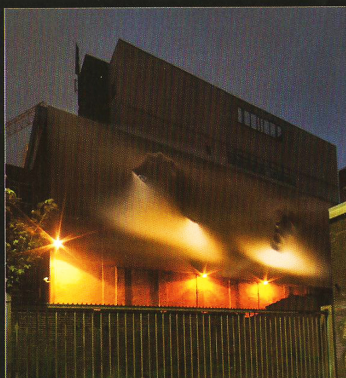
Rejoice in the Lamb consists of several parts that differs in character, sometimes mysterious and peaceful, sometimes powerful and rebellious. Lighting designer Michael Suk puts accents on the vocal music with projections and LED-lighting. Light and sound conduct the public into an adventure of space, light, shadow and color.

A concert lasts twenty minutes. **Start: Saturday 6 November at 7, 8 and 9 pm.** It will be recorded and played during GLOW continuously accompanied by the special light effects of Michel Suk.

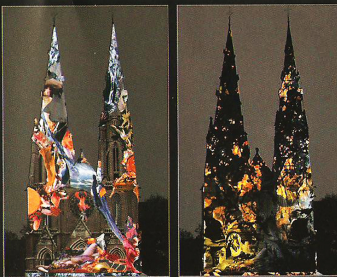
www.shiner.demon.nl
www.korenfestivaleindhoven.nl

GLOW

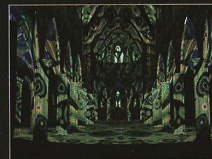
EINDHOVEN CITY OF LIGHT
WWW.GLOWEINDHOVEN.NL



Aldo Hoeben, *Indruk*, 2010



Teresa Mar, *Equilibrium*, 2010



Michel Suk, *Rejoice in the Lamb*, 2010